



M&M QUALTECH

Design • Engineer • Manufacture

Turn your Product from a Vision into a
Commercial Reality



M&M QUALTECH

Design • Engineer • Manufacture

M&M Qualtech has over thirty years' experience working with a range of electronic medical devices including diagnostic equipment, monitoring and respiratory devices as well as numerous and varied clinical therapies requiring electronics.



Our industry experience and engineering capabilities allow us to quickly understand your requirements, becoming an integral part of your manufacturing team. We understand the many challenges in medical device development and commercialization and work to provide innovative, cost effective design, engineering and manufacturing services - getting your new technologies to market quickly and competitively with quality.

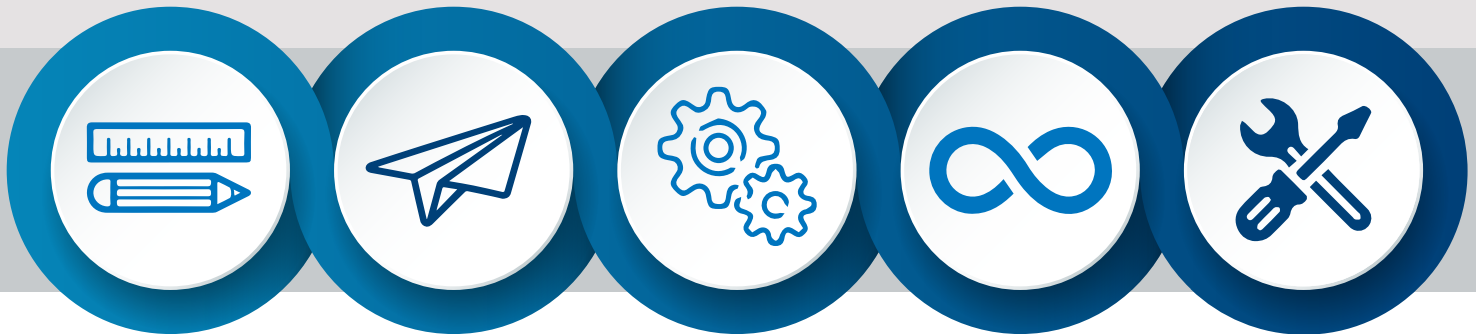


ISO 9001:2015
Certified



Your Total Product Lifecycle Partner

From conception and early prototyping to advanced manufacturing and global supply chain management we help our customers launch their products to market with speed and agility.



Design for Excellence (DfX)

We ensure that your design is cost optimised for volume manufacturing, conforms to industry regulations and incorporates best practices in Design for Manufacture, Test, Cost and Logistics

New Product Introduction (NPI)

We introduce hundreds of new products across various industries annually focusing on quality, excellence and speed

Manufacture

From low to medium to high volume capabilities we provide flexible and scalable solutions, accelerating market access

Supply Chain Management

Local and global logistics solutions often incorporated into client's ERP systems

End of Life/Repair

Provide repair and end of life services for electronic devices including recall, troubleshoot, repair, test and ship



M&M QUALTECH

Design • Engineer • Manufacture

Parkmore Business Park West,
Galway, Ireland

+353 (0) 91 756677

www.mmqualtech.com